

GE Healthcare



LOGIQ S8

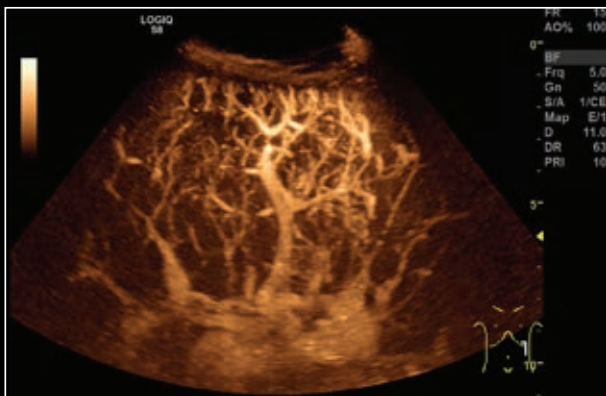
Simply amazing

healthymagination

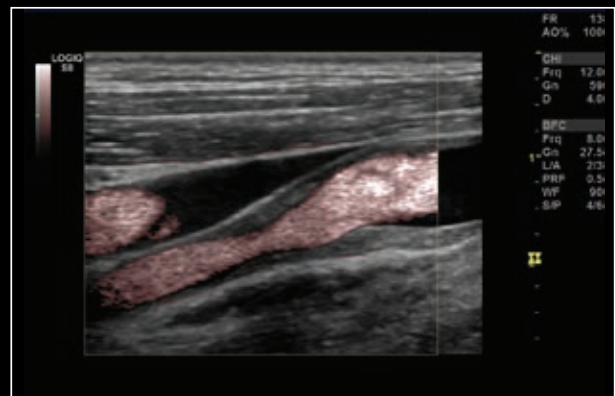


GE imagination at work

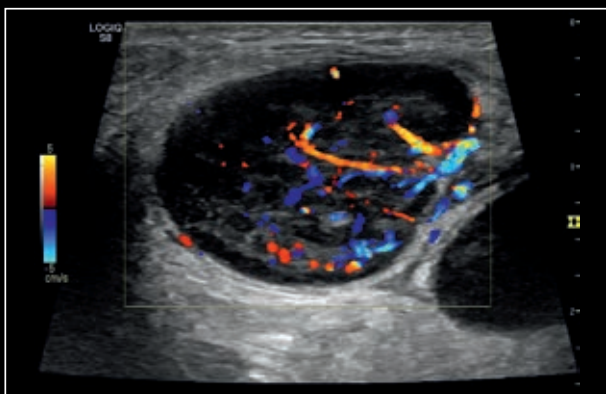
amazing.



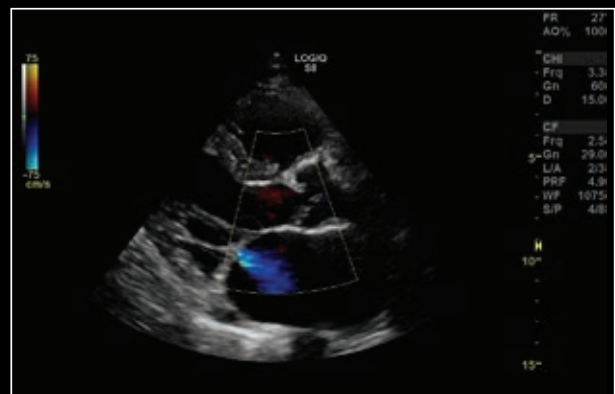
Lymph node shown with contrast and B-Flow



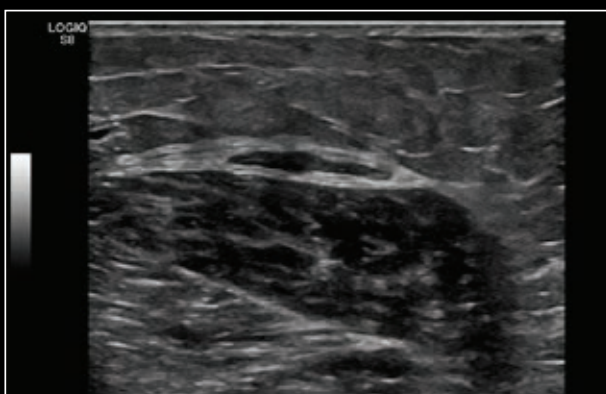
Carotid artery shown with B-Flow color



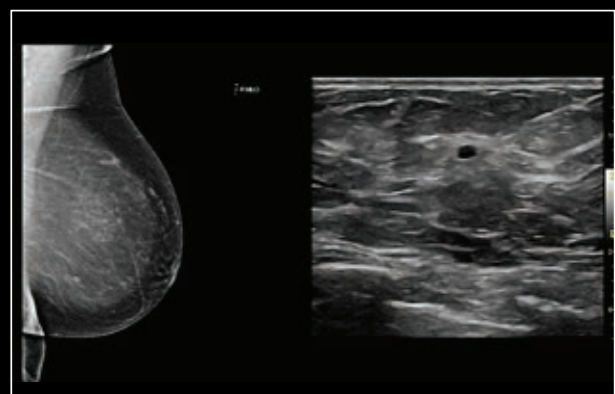
Outstanding color flow sensitivity in the small vessels of this abnormal lymph node



Cardiac image using M5S-D transducer and Color Doppler



Gastrocnemius muscle image shown using ML6-15-D transducer



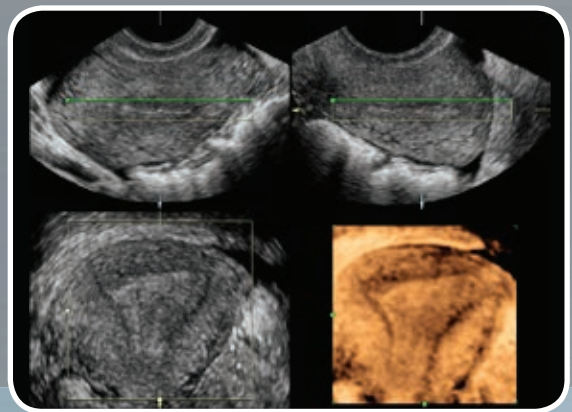
Ultrasound breast image with digital mammogram shown in DualView

Simply



SUPERB IMAGING

to help enhance your clinical confidence



We've migrated Agile Acoustic Technology into the LOGIQ* S8 S-Agile Architecture. Combined with the newly expanded family of E-Series transducers, including the dedicated biopsy probe and 3D/4D, the S-Agile architecture helps provide superb image quality in a wide range of clinical applications including abdominal, musculoskeletal, small parts, breast, vascular, OB/GYN, cardiology and more.

Features that help deliver additional imaging capabilities

B-Flow* displays true flow hemodynamics without the limitations of Doppler, helping enhance your clinical confidence in vascular assessment.

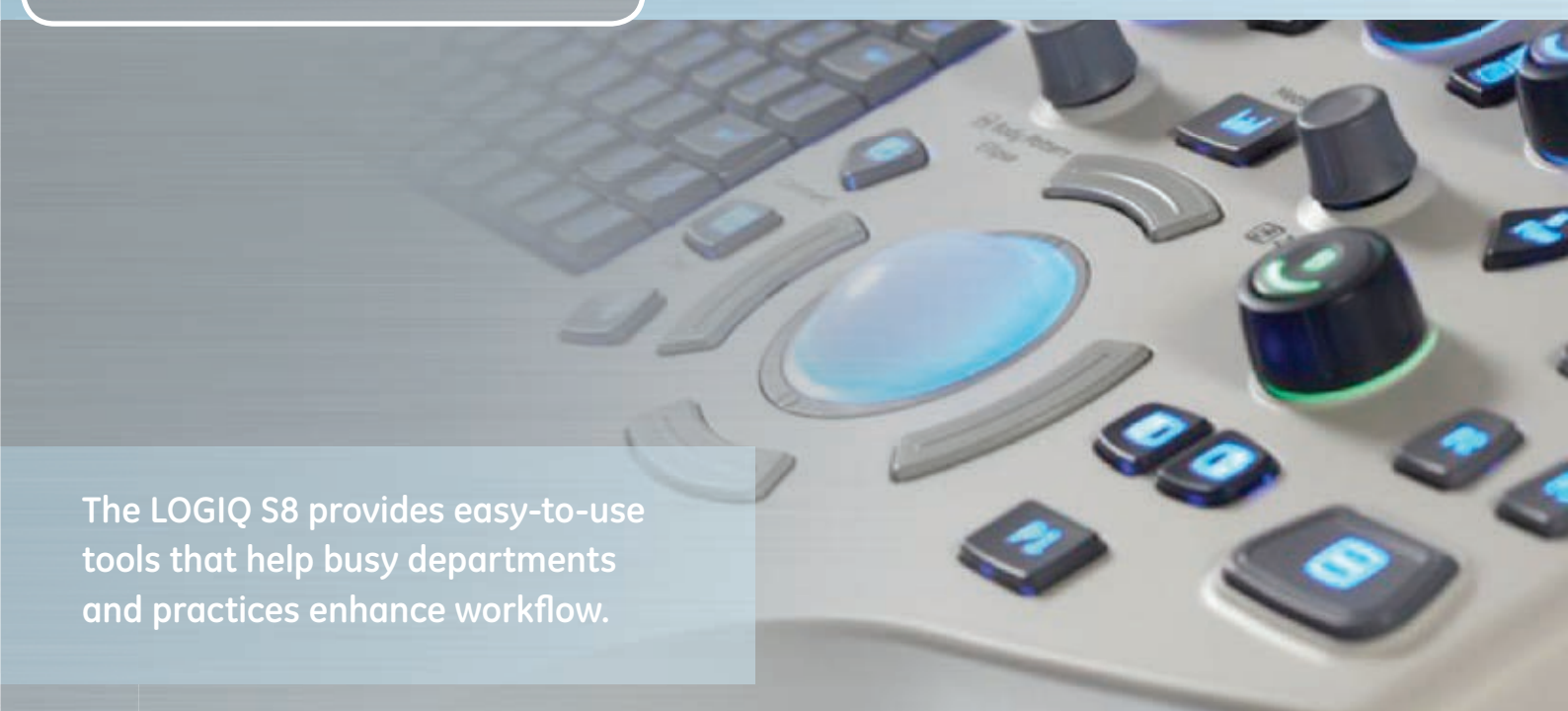
Contrast Enhanced Ultrasound (CEUS)* includes Raw Data TIC quantification and a full suite of settings to help achieve superb contrast agent resolution, sensitivity and penetration in a variety of clinical applications.

Elastography package covers a wide range of applications and helps increase diagnostic confidence with features including E-Index and Q-Analysis tools that are based on GE exclusive Raw Data processing.

2D PDI/CFM quantification helps enhance your diagnostic and therapeutic capabilities.

amazing.

SIMPLIFIED WORKFLOW *to help enhance your productivity & scanning comfort*



The LOGIQ S8 provides easy-to-use tools that help busy departments and practices enhance workflow.

Compare Assistant allows the user to easily retrieve a prior study and view it in split screen while performing the current study. This enables prior views and scanning parameters to be replicated, helping to provide consistency and enabling confident interpretations.

Automated measurement tools help streamline measurement intensive exams such as breast, cardiac, vascular and obstetrics, with user-guided automatic measurements that can be easily edited or accepted.

Productivity Packages for breast and thyroid exams enable the user to label, measure, and describe anatomy quickly and confidently – plus generate DICOM® SR compatible summaries.

Scan Assistant helps enhance exam consistency and efficiency by reducing keystrokes¹ and exam time.

Auto Optimization helps achieve excellent images and optimize Spectral Doppler with one keystroke.

Tools that help you work smarter

GE Raw Data enables a wide variety of image processing after the exam ends, helping save time and enhance workflow.

Power Assistant provides the system battery power during transport to help decrease system shut-down and reboot time by 90%² - helping achieve excellent productivity for high quality, portable exams.



We are committed to helping you with your daily challenges by investing in programs, applications flexibility and solutions that truly address your needs. We offer a variety of service and financing solutions that help meet your budget goals. We are also very dedicated to education and offer a wide range of educational opportunities. These include academic classroom training, online tutorials, LOGIQ Users Days, Meet the Experts workshops and additional customized solutions tailored to your needs. LOGIQ Club, the LOGIQ Users community, offers you easy access to education such as: video education, applications tip sheets, applications news and more.

SCALABLE TO YOUR NEEDS

to assist with your clinical requirements



The LOGIQ S8 ultrasound system enables you to provide excellent care to your patients. We are committed to providing you superb imaging and simplified workflow in a system that is scalable to your needs – helping you make confident decisions and supporting your clinical needs.

Streamlined archiving and reporting

LOGIQ S8 provides robust DICOM connectivity and is compatible with many imaging IT solutions. This connectivity allows you to save images to a central location and review alongside other imaging modalities. With ViewPoint* 6, GE Healthcare's reporting and image management solution, users can connect with a PACS or Electronic Medical Record (EMR) for comprehensive patient record storage.

Scan with ease

- Fully adjustable console and flat-screen
- Smooth wheel system rolls easily across carpets or hard surfaces, and maneuvers easily in confined spaces
- Four active pin-less ports and one parking slot enable convenience when working through a wide range of clinical applications
- Probe holders on both sides of the operating panel keep the needed transducers available at your fingertips
- Large touchscreen enables easy customization of settings and commands to user preference

The LOGIQ S8 follows the Society of Diagnostic Medical Sonographers (SDMS) ergonomic guidelines.

Having a streamlined and innovative design is not enough, it should also promote exceptional ease of use and user comfort. LOGIQ S8 offers incredible scanning comfort and features designed with the user in mind.



¹ Data provided from an internal study performed by a third party sonographer.

² Data provided from an internal study performed by GE engineers comparing to the prior version of the LOGIQ S8.

* Not for sale in the United States. Not cleared for use by the United States FDA.

©2013 General Electric Company – All rights reserved.

General Electric Company reserves the right to make changes in specifications and features shown herein, or discontinue the product described at any time without notice or obligation. Contact your GE Representative for the most current information.

GE and GE Monogram are trademarks of the General Electric Company.

GE Medical Systems Ultrasound & Primary Care Diagnostics, LLC, a General Electric company, doing business as GE Healthcare.

* Trademark of General Electric Company.

DICOM is a registered trademark of the National Electrical Manufacturers Association. Third party trademarks are the property of their respective owners.



GE Healthcare
9900 Innovation Drive
Wauwatosa, WI 53226
U.S.A.
www.gehealthcare.com

Europe
GE Healthcare
Beethovenstr. 239
D - 42655 Solingen
T 49 212 2802 0
F 49 212 2802 28

APAC
GE Healthcare Asia Pacific
4-7-127, Asahigaoka,
Hino-shi, Tokyo
191-8503 Japan
T +81 42 585 5111