

GE Healthcare

Voluson e

Extraordinary vision

Compact series



Extraordinary vision

Your needs shape the future of ultrasound. It's your feedback that drives every technological advancement that has made GE Healthcare's Voluson® a leader in women's health ultrasound. Working together, we continually evolve the Voluson family of compact ultrasound systems. It's part of our commitment to provide you with ultrasound systems that help deliver extraordinary vision in dedicated clinical settings to help you provide extraordinary care for your patients.

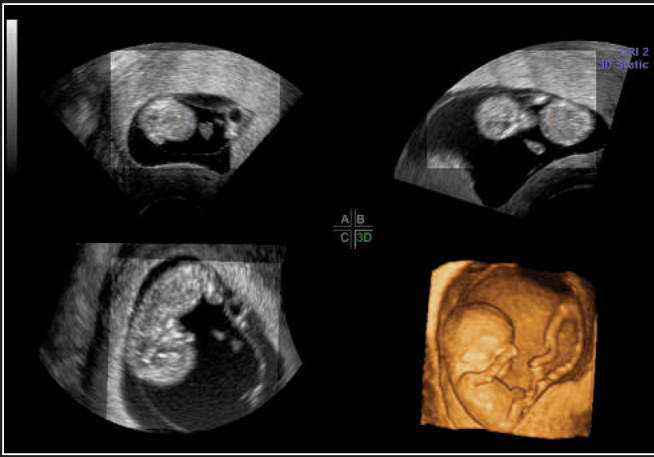


begins with you

That means helping to increase clinical confidence with exceptional 2D and 3D ultrasound image quality by using a compact ultrasound system dedicated to obstetrics and gynecology, as well as innovative emerging applications such as labor and delivery and assisted reproductive medicine. We are committed to help you to efficiently integrate ultrasound into your clinical settings.

That's the power of Voluson *e*. It's designed specifically to give you extraordinary vision in a portable ultrasound system that is dedicated to your clinical setting to help you confidently make pivotal patient decisions.



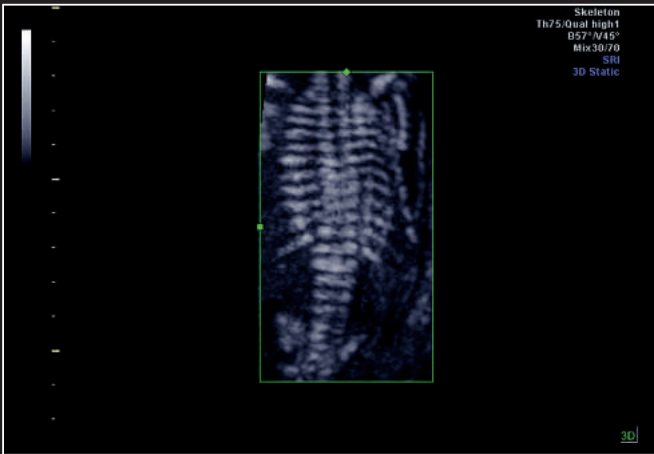


Multiplanar reconstruction of an 11-week fetus demonstrating excellent detail of fetal limbs and umbilical cord

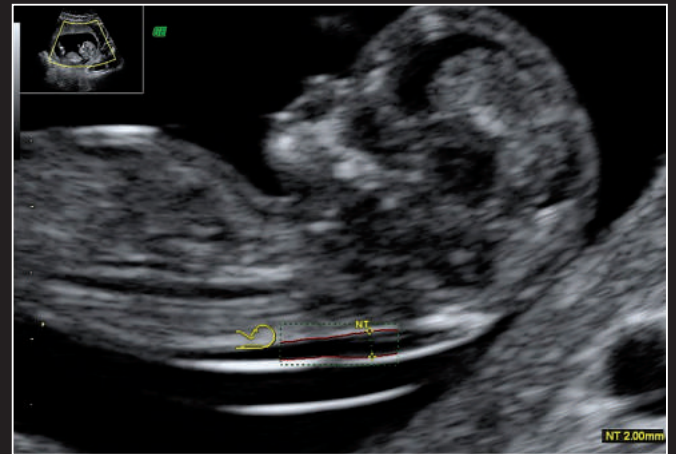


3rd Trimester fetal profile, excellent penetration

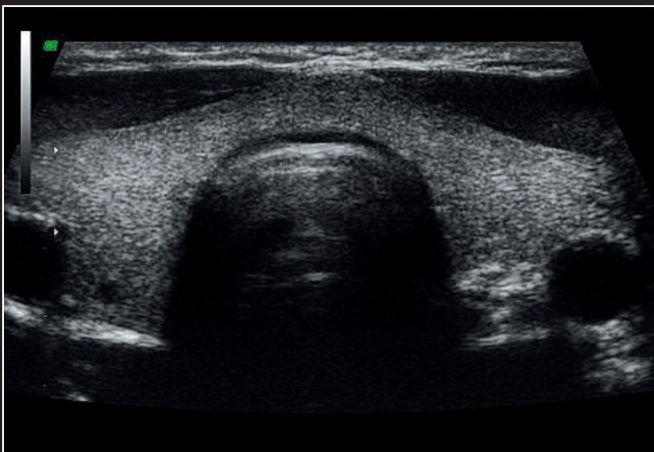
Extraordinary vision



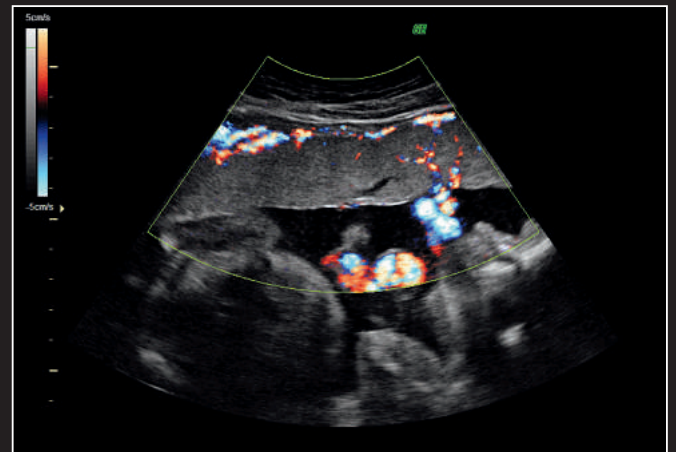
3D Rendering (transparent maximum) showing impressive skeletal details: spine, ribs, pelvic bones, etc.



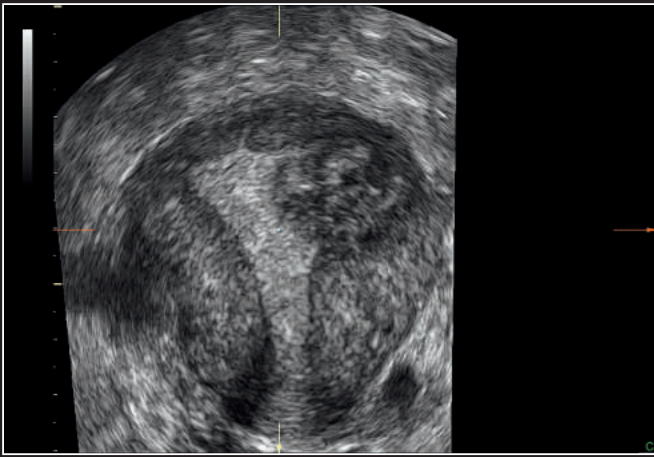
First trimester fetus showing SonoNT measurement



Virtual Convex image of normal thyroid using the 12L small parts probe; note the excellent uniformity throughout the field of view



Normal anterior placenta with Coded Harmonics Imaging and SRI; HD-Flow™ delineates cord insertion and placental flow



Coronal image of the uterus with a fundal fibroid demonstrated with SRI

Innovations in 2D and 3D image quality:

Speckle Reduction Imaging (SRI) and CrossXBeam^{CR1} deliver advanced computational power, allowing for simultaneous processing of CrossXBeam^{CR1}™ and SRI together – enabling added speckle reduction, contrast resolution and image clarity.

HD-Flow uses a bi-directional Doppler feature to achieve a more sensitive vascular study and help reduce overwriting.

High Definition Zoom allows the user to define the area of interest for high-resolution magnification.

Innovations in imaging:

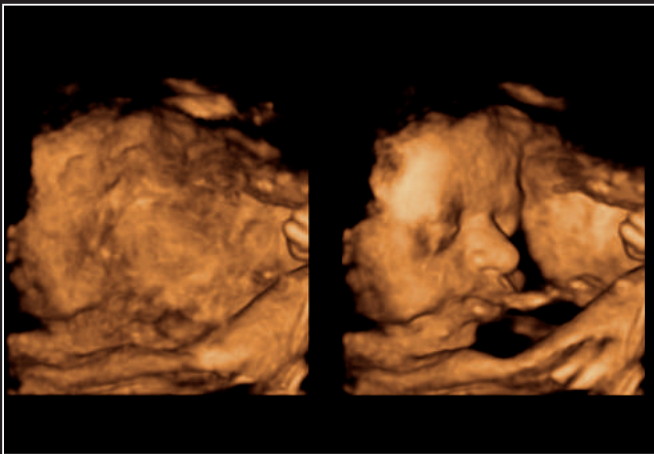
3D/4D Advanced is an optional package that contains a suite of volume tools, including real-time 4D and static 3D, allowing for a comprehensive examination while helping to reduce time of acquisition and patient waiting time.

Beta View allows the user to steer the scan plane to any oblique direction, which can result in less manipulation of the probe and added patient comfort.

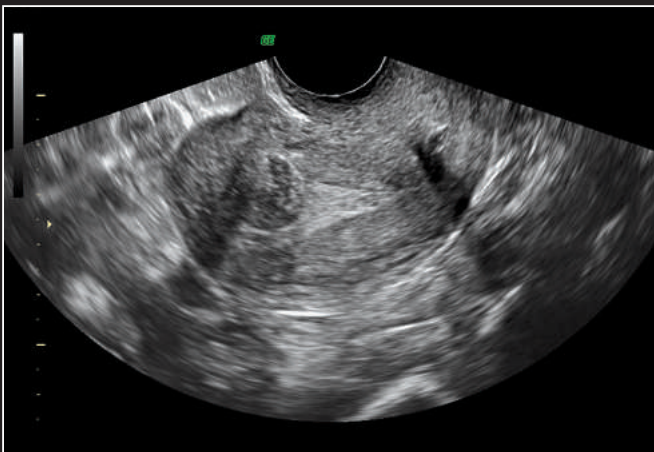
XTD View allows for freehand acquisition of a panoramic view over a wide region of the body.

Innovations in probe technology:

A range of probes is supported by Voluson *e* to meet clinical needs in dedicated application areas, including obstetrics, gynecology, assisted reproductive medicine, and labor and delivery.



SonoRender Start helps provide fast access for surface rendering. Following volume acquisition (left image), activating SonoRender Start helps reveal the fetal face (right image) without additional manipulations.



Sagittal image of uterine fibroid using the RIC5-9 probe with SRI

Innovations in automation:

SonoNT™ (Sonography-based Nuchal Translucency) – A new technology that provides semi-automatic, standardized measurements of the Nuchal Translucency as early as 11 weeks. This tool helps avoid the inter-and intra-observer variability that comes with manual measurements, as well as over-and underestimation. SonoNT helps provide you with the reproducibility you demand and can integrate easily into your workflow.

SonoRender Start – New auto optimization tool expands into 3D examinations, helping to make 3D rendering easier for all users.



Helping you improve your efficiency

Voluson® Station features an advanced design that empowers you to maximize the use of your Voluson compact system. The Station design transforms your Voluson compact into a cart-based system. Whether you require the convenience of a portable, or the stability of a more stationary system – you can rely on the exceptional image quality you expect from a Voluson.

The **GoPack** allows you to securely and conveniently move your entire Voluson compact system and probes from one location to the next.

SmartNetwork connectivity allows the user to save different network profiles in an easy setup wherever Voluson *e* is being used.

Wireless capabilities enable data transfer, including DICOM, to a workstation for storage and future analysis.

ViewPoint – our powerful ultrasound data and image management solution – combined with Voluson *e* makes it easy to archive images and volumes, create structured reports and more.

InSite™ ExC directly connects Voluson *e* to live clinical applications and technical support experts at GE Healthcare.

VolusonClub membership connects a global network of Voluson users – Learn, Network, Share at www.volusonclub.net.



© 2011 General Electric Company – All rights reserved.

General Electric Company reserves the right to make changes in specifications and features shown herein, or discontinue the product described at any time without notice or obligation. Contact your GE Representative for the most current information.

GE, GE Monogram, Voluson, CrossXBeam[®], HD-Flow, SonoNT, SonoAVC and SonoVCAD are trademarks of General Electric Company.

GE Medical Systems Ultrasound & Primary Care Diagnostics, LLC, a General Electric company, doing business as GE Healthcare.

UNITED KINGDOM
71 Great North Road
Hatfield, Hertfordshire
AL9 5EN
T 44 1707 263570
F 44 1707 260065

AMERICAS
GE Healthcare
9900 Innovation Drive
Wauwatosa, WI 53226
U.S.A.
T 1 888 202 5582

ASIA
GE Healthcare Clinical
Systems ASIA
1105-1108 Maxdo Center
8 XingYi Road, Shanghai
200336
T 86 21 5257 4640
F 86 21 5208 0582

Extraordinary vision for the environment

The Voluson compact ultrasound systems are among the most energy efficient in the industry. That means with every image you'll be using less energy, saving money and contributing to a better environment. It's part of the GE commitment to invest in innovative solutions to environmental challenges while empowering you with advanced tools for healthcare delivery.



About GE Healthcare

GE Healthcare provides transformational medical technologies and services that are shaping a new age of patient care. Our broad expertise in medical imaging and information technologies, medical diagnostics, patient monitoring systems, drug discovery, biopharmaceutical manufacturing technologies, performance improvement and performance solutions services help our customers to deliver better care to more people around the world at a lower cost. In addition, we partner with healthcare leaders, striving to leverage the global policy change necessary to implement a successful shift to sustainable healthcare systems.

Our "healthymagination" vision for the future invites the world to join us on our journey as we continuously develop innovations focused on reducing costs, increasing access and improving quality around the world. Headquartered in the United Kingdom, GE Healthcare is a unit of General Electric Company (NYSE: GE). Worldwide, GE Healthcare employees are committed to serving healthcare professionals and their patients in more than 100 countries. For more information about GE Healthcare, visit our website at www.gehealthcare.com.

GE Ultraschall Deutschland GmbH
Beethovenstr. 239, D-42655 Solingen
T 49 212-28 02-0
F 49 212-28 02-28

ecomaginationSM



GE imagination at work

healthymagination