

GE Healthcare

Proven performance.

LOGIQ® P5 ultrasound system



Timeless results

Clinicians around the world have made LOGIQ P5 one of the most widely accepted GE ultrasound systems. Building upon this solid platform, we continue to extend the performance and clinical capabilities of the LOGIQ P5.

The affordable, full-featured LOGIQ P5 delivers exceptional performance across many care areas – meeting the demands of specialties such as general imaging, women’s healthcare and urology. And the LOGIQ P5 features many breakthrough technologies migrated from our advanced ultrasound platforms.

Leading capabilities

With a balanced combination of technology and performance, the LOGIQ P5 delivers exceptional image quality to meet your clinical needs. Many advanced applications from our high-end ultrasound systems – such as Speckle Reduction Imaging (SRI), CrossXBeam™ imaging, Auto Optimization (AO) and Phase Inversion Harmonics – bring you enhanced image quality.

Enhanced 4D performance

The LOGIQ P5 gives you affordable access to high-quality 4D imaging. A new, advanced SRI algorithm and streamlined workflow deliver easier and faster 4D studies that result in improved image quality.

Advanced transducer technology

Single-crystal probes offer ultra-wide bandwidth and high sensitivity for better cardiac imaging

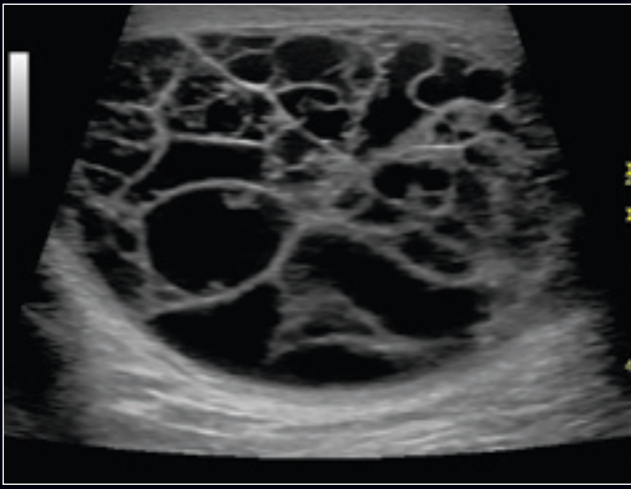
A great fit for many specialties

The LOGIQ P5 fits in well across a broad range of clinical applications and specialty areas. Specialized transducers, high-resolution image quality and convenient workflow tools make it well suited for urology. Its 4D workflow, exceptional image quality and tailored report packages are ideal for OB/GYN.

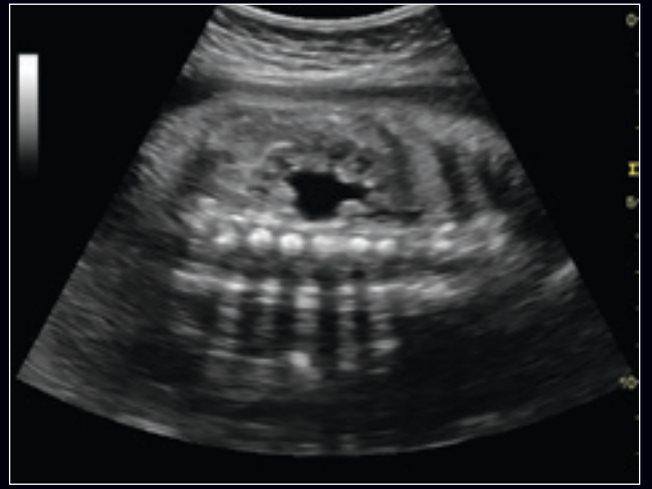
Exceptional ultrasound that’s easily portable

Lightweight and easy to maneuver, the highly mobile LOGIQ P5 can be moved effortlessly from patient to patient, or room to room.

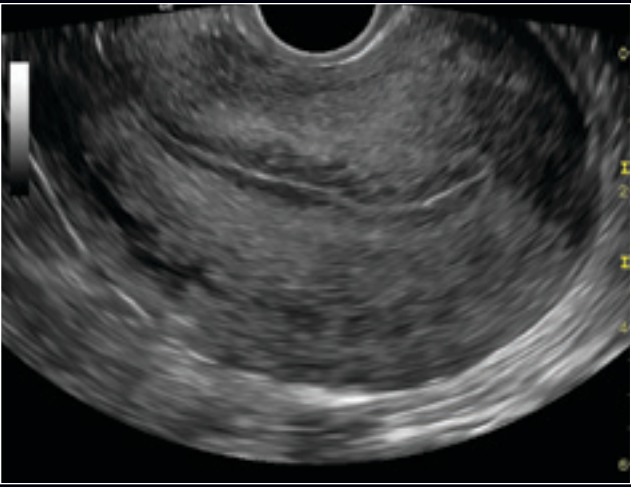




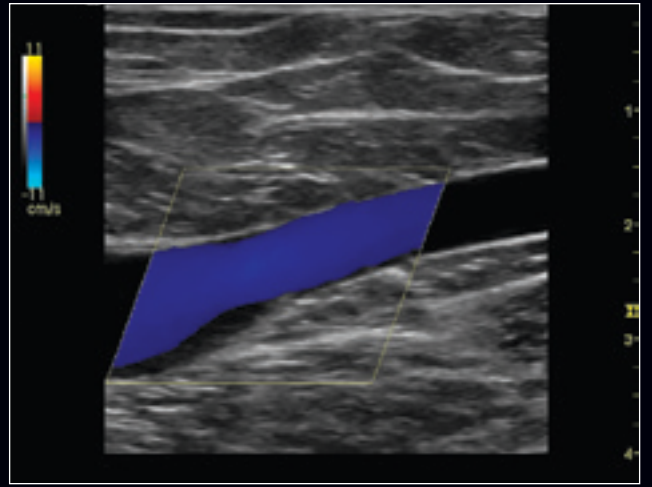
Complex hydrocele using the 11L transducer with CrossXBeam and harmonic imaging.



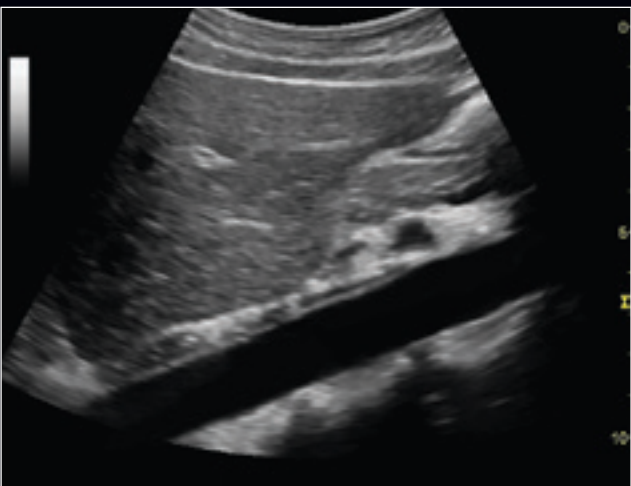
Fetal renal hydronephrosis using 5CS transducer with CrossXBeam and harmonic imaging.



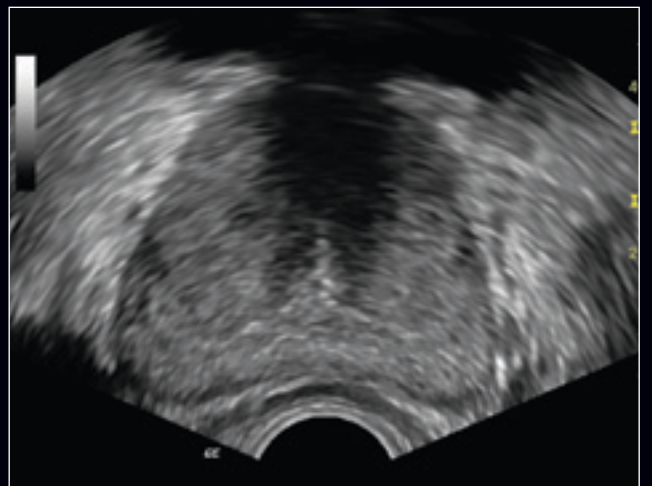
Uterus using E8CS transducer with CrossXBeam and harmonic imaging.



GSV junction using 11L transducer with CrossXBeam and harmonic imaging.



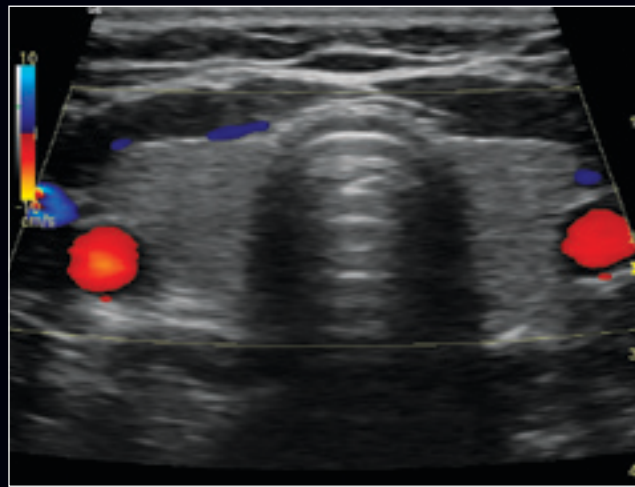
Aorta image using 4C transducer with CrossXBeam and harmonic imaging.



Prostate image using E8CS transducer with CrossXBeam and harmonic imaging.



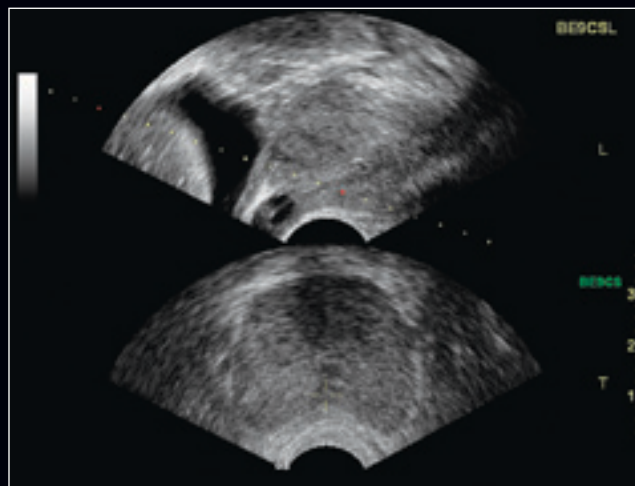
First trimester fetus using E8C transducer with CrossXBeam and harmonic imaging.



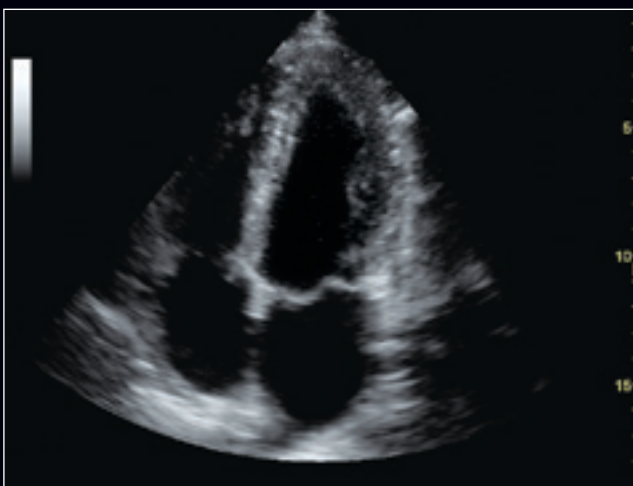
Thyroid gland using 11L transducer with virtual convex B-mode, virtual convex color, CrossXBeam and harmonic imaging.



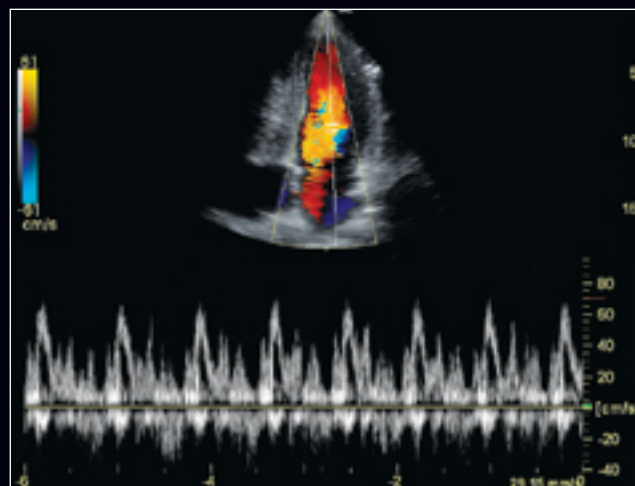
4Ch Heart image using 4C transducer with CrossXBeam and harmonic imaging.



Simultaneous biplane prostate image using BE9CS transducer with harmonic imaging.



4Ch Heart using 3S probe with harmonic and SRI imaging.



4Ch Heart using 3S probe with color Doppler, PW Doppler, harmonic and SRI imaging.



Flexible, advanced.

The LOGIQ P5 is an agile, easy-to-use system. The ergonomic design allows use virtually anywhere – even in small exam areas. Images display on a 15" LCD flat monitor with an articulating arm. Move the screen to any position for unobstructed viewing by the sonographer, the physician, or the patient. Tuck it out of the way during transport.

A fully functional keyboard is integrated on board. You'll appreciate the convenience and ease-of-use of hot keys and user-defined keys.

Whether you need a versatile, high-performance system for a specialized practice, or a secondary system for a large hospital, the LOGIQ P5 delivers the image quality and high performance of a system twice its size.

Streamlined data management

Flexible, advanced productivity and connectivity features help maximize equipment usage. The LOGIQ P5 leverages Raw Data capability, which is enabled by our TruScan™ architecture.

Patient data from the LOGIQ P5 can be seamlessly exported to a memory stick or sent via DICOM to the hospital network. A configurable reporting package allows hard copy images or reports to be printed on any networked printer. Storage flexibility allows data and images to be saved in PC-viewable format.

Shaping the future

GE Healthcare's on-site applications training can help maximize the functionality of ultrasound imaging for your care area. Certified specialists and customized service contracts give you the ongoing support that you need, with the customer-driven focus you expect.



©2009 General Electric Company – All rights reserved.

General Electric Company reserves the right to make changes in specifications and features shown herein, or discontinue the product described at any time without notice or obligation.

GE, GE Monogram, CrossXBeam, LOGIQ and TruScan are trademarks of General Electric Company.

GE Medical Systems, Ultrasound & Primary Care Diagnostics, LLC, a GE Healthcare business.

About GE Healthcare

GE Healthcare provides transformational medical technologies and services that are shaping a new age of patient care. Our broad expertise in medical imaging and information technologies, medical diagnostics, patient monitoring systems, drug discovery, biopharmaceutical manufacturing technologies, performance improvement and performance solutions services helps our customers to deliver better care to more people around the world at a lower cost. In addition, we partner with healthcare leaders, striving to leverage the global policy change necessary to implement a successful shift to sustainable healthcare systems.

Our “healthymagination” vision for the future invites the world to join us on our journey as we continuously develop innovations focused on reducing costs, increasing access and improving quality and efficiency around the world. For more information about GE Healthcare, visit our website at www.gehealthcare.com

GE Healthcare
9900 Innovation Drive
Wauwatosa, WI 53226
U.S.A.

www.gehealthcare.com



imagination at work