

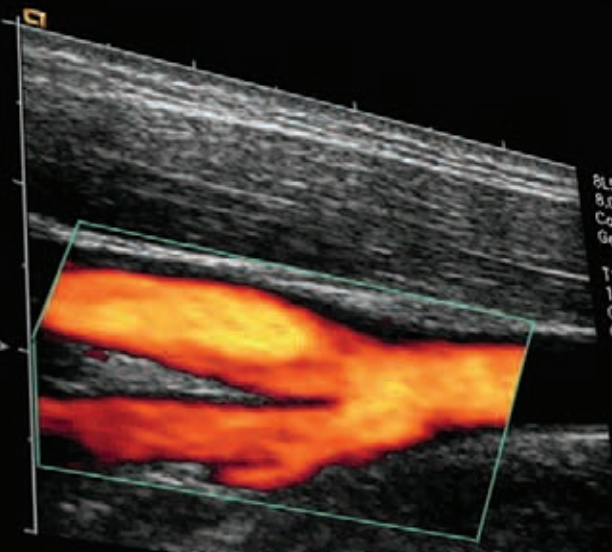


## ACUSON Sequoia 512 Ultrasound System

The ultimate in imaging

Optimum imaging for every patient

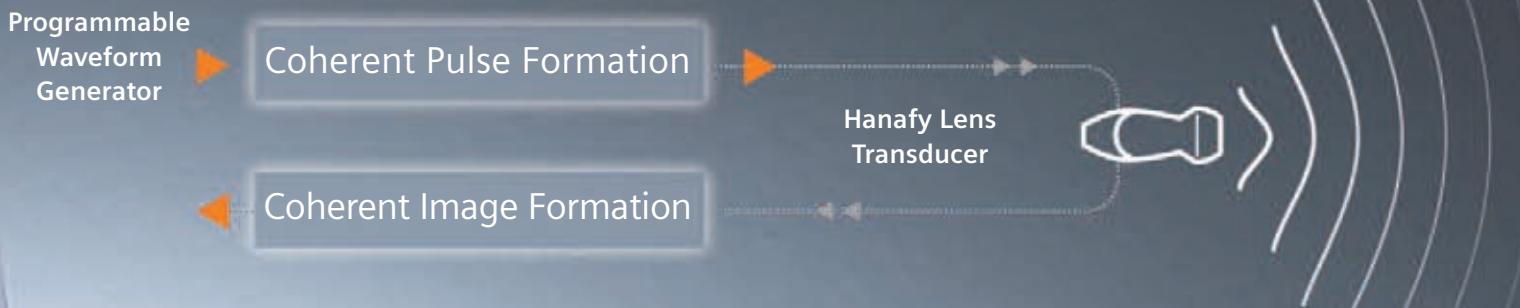
SIEMENS



8L5 7:29:40 am  
8.0MHz 16Hz  
Carotid 20mm  
General  
11/-2/ 3/E:1+1  
1/2 **304.0MHz**  
CD Gain = 47  
CDE 21dB

ACUSON Sequoia 512

# ACUSON Sequoia 512–Patient Specific Imaging



## Native Patient Specific Imaging Technology

The Sequoia system represents the most advanced technology in ultrasound imaging. And each unique technology and innovation is designed to help you make more confident and accurate diagnoses, delivering excellent image quality and enhancing workflow, across a broad range of patient types and applications.

The Sequoia system is also engineered to help make your practice as efficient as possible. It is designed to be the centerpiece of your diagnostic or research practice, today, tomorrow and far into the future: a comprehensive, state-of-the-art ultrasound system without equal—and without compromise.

## SEQUOIA 512

**Every patient deserves the best.**

**Now, and into the future.**

The ACUSON Sequoia™ ultrasound system is synonymous with unparalleled imaging performance, patient after patient, in a wide range of clinical applications. Siemens continues to lay the foundation for the future of ultrasound, reaffirming our commitment to imaging excellence and unceasing innovation that will continue to put the Sequoia system at the forefront of ultrasound performance into the 21st century.

► Native™ patient specific imaging adapts both phase and amplitude information to each patient's unique properties in real time, delivering consistently good image quality across the broad range of patients

**Individual Acoustic Properties**

512

## SEQUOIA 512

### Targeted imaging for every patient's needs

The ACUSON Sequoia system is designed to provide comprehensive and consistent imaging for every patient's unique acoustic properties. The Sequoia system's advanced technologies deliver greater image content, enhanced detail, superior contrast resolution and penetration, and excellent color Doppler sensitivity at depth. In short, the Sequoia system's unique range of capabilities deliver better images, with less work, for more confident diagnosis.

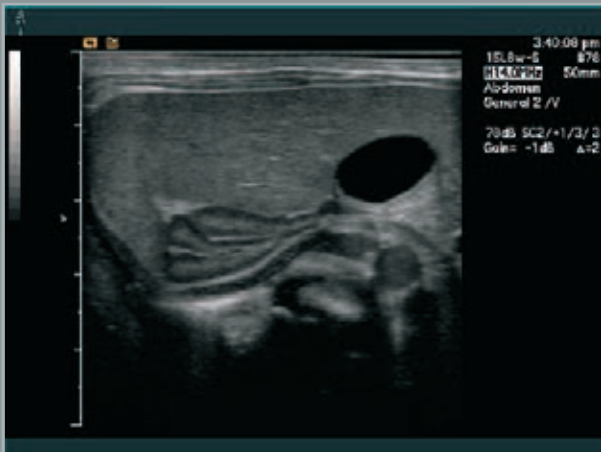
- Native TEQ™ ultrasound technology: a Siemens-exclusive image processing technology that consistently enhances image quality across all patients and clinical applications.
- High-Resolution Color Flow: applies chirp-coded excitation to color Doppler to address spatial resolution, low flow sensitivity, penetration, hemodynamics and small vessel visualization
- Cadence™ contrast pulse sequencing technology\*: the industry's most sensitive contrast agent imaging detection utilizing both non-linear fundamental and higher order harmonics to provide enhanced diagnostic confidence



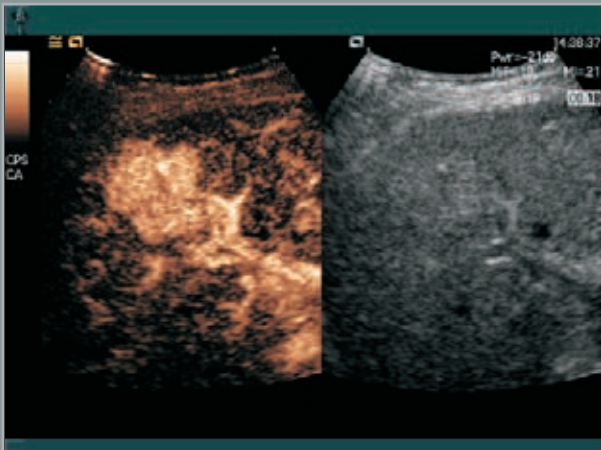
# Abdomen



▶ Harmonic compound imaging is used to enhance the contrast resolution in this image of a liver mass

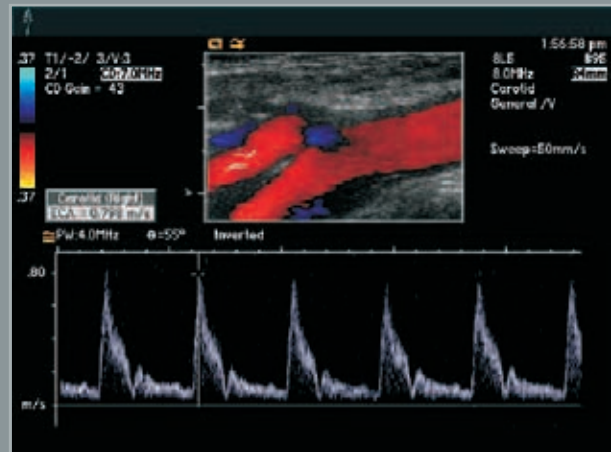


▶ In this image of the adrenal gland, Native™ tissue harmonic imaging provides superb spatial and contrast resolution at high frequency

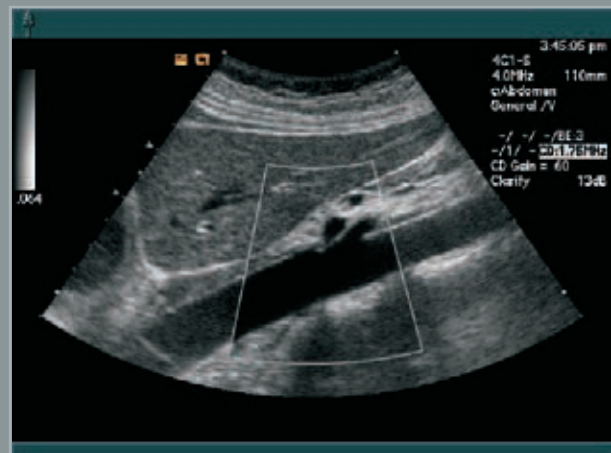


▶ Cadence CPS technology\* provides superior sensitivity and specificity as demonstrated in this contrast enhanced liver mass

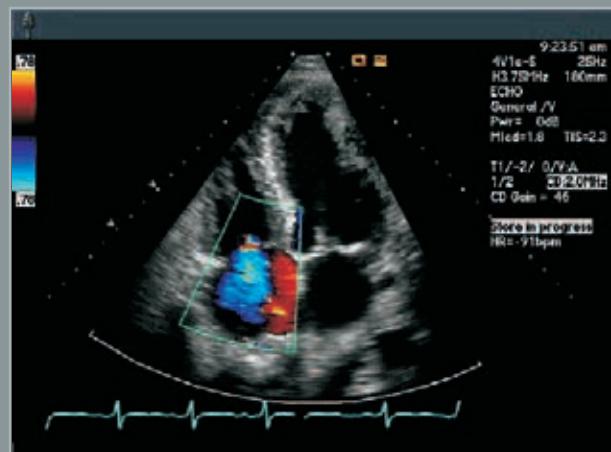
# Cardiovascular



- ▶ TEQ technology for spectral Doppler instantly adjusts Doppler gain, dynamic range, baseline and scale as demonstrated in this external carotid artery



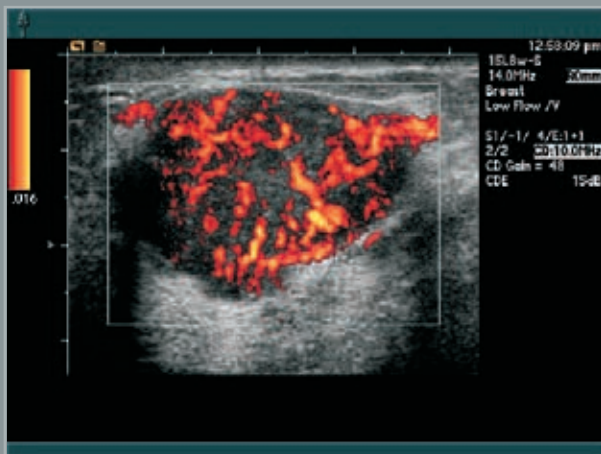
- ▶ Clarify VE technology is used to eliminate noise and enhance contrast resolution in this image of the abdominal aorta



- ▶ Harmonic imaging and color Doppler sensitivity with the 4V1c transducer highlights tricuspid regurgitation and LV endocardial definition



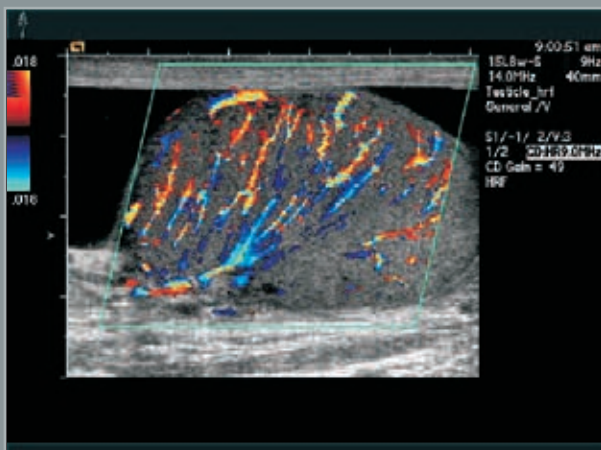
# Small Parts



- ▶ The unparalleled spatial resolution and sensitivity of SST™ color Doppler is easily seen in this image of a malignant breast mass

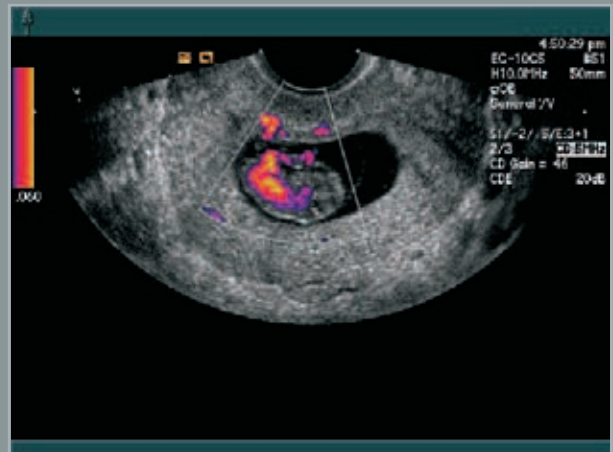


- ▶ Spatial Compounding *Plus* on the 15L8w transducer beautifully demonstrate a solid thyroid mass



- ▶ High Resolution Color Flow utilizes chirp coded excitation to address spatial resolution and sensitivity in normal testicular flow

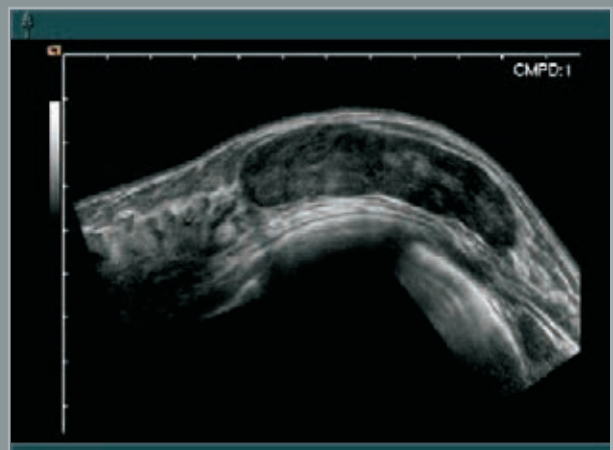
# Women's Health



- ▶ Color Doppler energy is used to accurately illustrate the cardiovascular system of this embryo



- ▶ A uterine fibroid is clearly demonstrated with the use of TCE™ tissue contrast enhancement technology



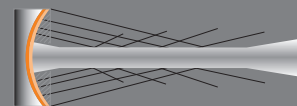
- ▶ FreeStyle™ extended imaging is used to completely display the borders of a large fibroadenoma of the breast

## SEQUOIA 512

**See more clearly. Diagnose more confidently.**

To give every patient the care and diagnostic precision they deserve, the Sequoia system provides an unprecedented array of highly refined, specifically targeted imaging applications, all in one ultra-premium, versatile platform.

- Clarify™ vascular enhancement technology: a Siemens-exclusive real-time, adaptive enhancement technique that utilizes color Doppler energy data to enhance B-mode image quality
- MultiHertz™ multiple frequency imaging technology: provides broad bandwidth for independent frequency selection eliminating the need to change transducers during exams
- ▶ Hanafy Lens Transducer technology: generates a narrow slice thickness improving image uniformity and focus throughout the field of view



3:32:29 pm #47  
 6C2-S 120mm  
 H5.5MHz  
 aOB  
 NTHI General /V  
 75dB SC1/+1/3/4  
 Gain= 0dB Δ=2

512

## SEQUOIA 512

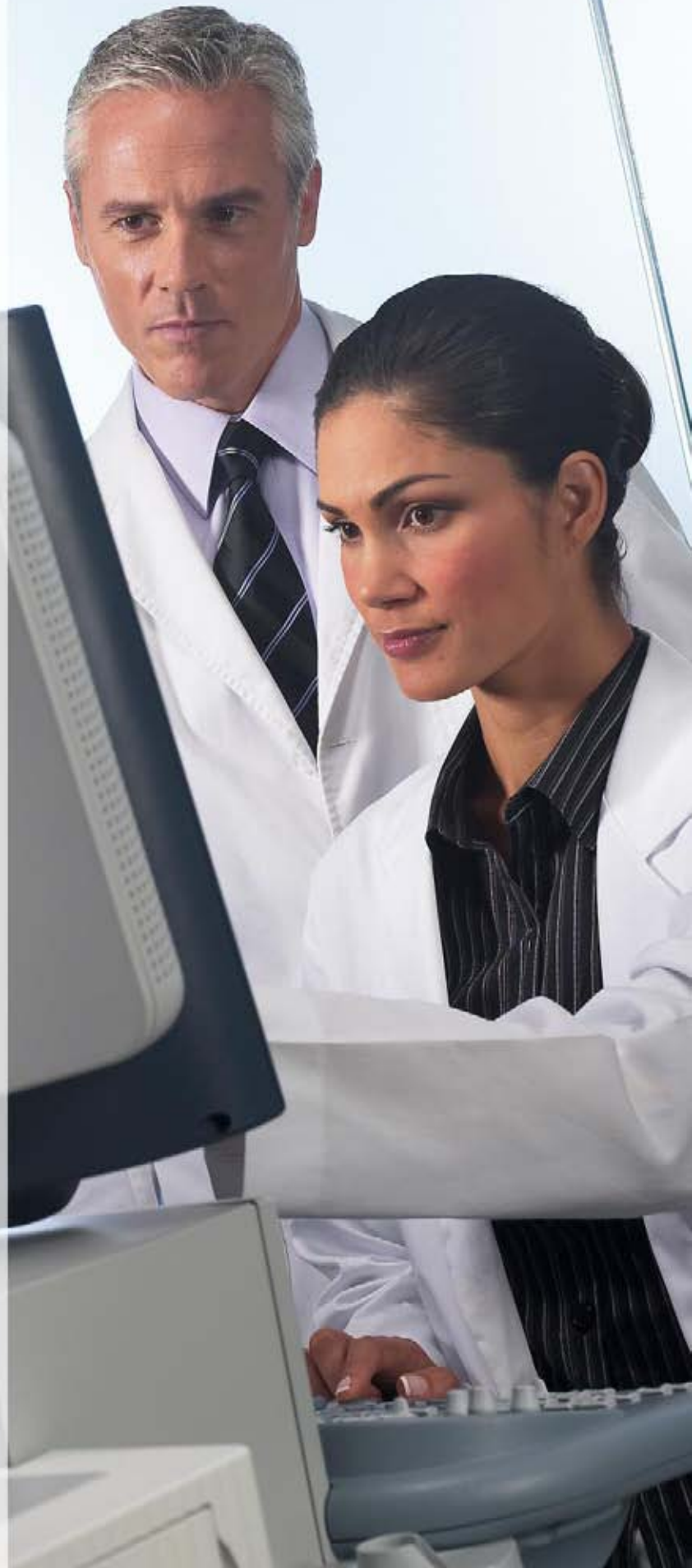
### A Comprehensive Approach To Stress-Free Scanning

With the ACUSON Sequoia system, we take ergonomic performance and operator comfort just as seriously as we take imaging accuracy.

- Control panel with tilt/swivel monitor allows optimal ergonomic positioning providing greater operator comfort
- Improved transducer design and imaging performance reduce the hand pressure required to obtain a good image, especially on technically difficult to image patients
- The Sequoia system's new Flat Panel Display improves readability in all lighting environments



► Flat Panel Display folds forward for increased operator vision during system transport. The strong, rigid mount holds the display firmly in position, no matter how it is oriented



## SEQUOIA 512

**Get the most from your investment**

Life is the unique customer care solution from Siemens that helps you get the most from your investment. From the moment of your purchase, Life surrounds you with an array of programs and support that enables the continuous development of your skills, productivity, and technology. Allowing you to broaden your capabilities. Increase profitability. And take patient care to the next level.

► **Helping you run at peak performance day in and day out**



**Proven Outcomes** This is what Siemens is helping to deliver right now. Outcomes that result from truly efficient workflow. Outcomes that improve your bottom line. Outcomes that lead to a level of care that feels exceptional to the patient and the care provider. Proof positive of the value of integrating medical technology, IT, management consulting and services. In a way that only Siemens can.



We see a way to reduce image optimization time by up to 80%

Proven Outcomes

## SEQUOIA 512

**Streamlined workflow, acquisition to archive**

The ACUSON Sequoia system's advanced technologies are designed to make image acquisition easier, reduce exam time and increase your department's overall efficiency. Embedded DICOM advances workflow by easily integrating patient data into both local and hospital-wide networks.

- Native™ TEQ ultrasound technology instantly provides repeatable, consistent image quality reducing exam time, inter-operator variability, and operator hand motion
- Proven system design enhances workflow throughout acquisition, retrieval, and archiving

▶ The Sequoia system's new onboard CD/DVD drive allows far more image data to be stored on a single disc, making recording, archiving and retrieving images more efficient than ever before



\*At the time of publication, the U.S. Food and Drug Administration has cleared ultrasound contrast agents only for use in LVO. Check the current regulation for the country in which you are using this system for contrast agent clearance.

ACUSON, Cadence, Clarify, FreeStyle, MultiHertz, Sequoia, Native, SST, TCE and TEQ are trademarks of Siemens AG.

Please find fitting accessories:  
[www.siemens.com/medical-accessories](http://www.siemens.com/medical-accessories)

Siemens Medical Solutions USA, Inc.  
Ultrasound Division  
1230 Shorebird Way  
P.O. Box 7393  
Mountain View, CA 94039-7393 USA

#### **USA Headquarters**

Siemens Medical Solutions USA, Inc.  
51 Valley Stream Parkway  
Malvern, PA 19355-1406 USA  
Telephone: +1-888-826-9702  
[www.usa.siemens.com/medical](http://www.usa.siemens.com/medical)

#### **Contacts**

Europe: +49 9131 84-0  
Asia Pacific: +65 6341-0990  
Latin America: +1-786-845-0697

Siemens Medical Solutions USA, Inc.  
Ultrasound Division  
1230 Shorebird Way  
P.O. Box 7393  
Mountain View, CA 94039-7393 USA  
Telephone: +1-888-826-9702

Siemens **Medical**  
**Solutions** that help