



PHILIPS

Ultrasound

ClearVue

Your **versatile**
performer to depend on

Philips ClearVue ultrasound family



Over **70** countries

More than
5,000 systems

Touching
25 million
lives every year

For **one**
versatile family

Dependability

across all types of scanning

The Philips ClearVue ultrasound family brings together the advances that ultrasound professionals all over the world have said that they would most like to see in a high-value system. ClearVue is built from the ground up to deliver what's important to you and your patients.

Reliable from the start

The sleek yet rugged design is built for the dependability that is essential in challenging environments. ClearVue performs for you day after day.

The versatility your day demands

The ClearVue family offers workflow enhancements and a range of capabilities across multiple clinical specialties, including general imaging, abdominal, vascular, musculoskeletal, small parts, Ob/Gyn, and cardiac.

Performance from the inside out

Every member of the ClearVue family shares an advanced processing platform for high volume rates in real-time scanning for excellent image quality. With significant advances in software, hardware, and applications compared to previous ClearVue generations, the ClearVue family is now more hardworking than ever.

Scalable to protect your investment

Not only is ClearVue easy to learn and use because of its intuitive interface for scanning, but it is also easily upgradeable with additional clinical features and transducers to allow your system to evolve with you over time.



Reliability



Versatility



Performance



Scalability

Keeps you steps ahead

ClearVue grows with you, protecting your investment. As your needs evolve, you can upgrade to new clinical capabilities with ease.



ClearVue 350
Office-ready,
and can grow
with your needs

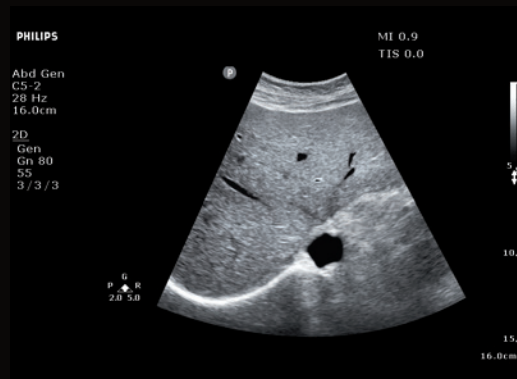
ClearVue 550
Hardworking,
for quick scans
in busy settings

ClearVue 650
Highly adaptable,
with 3D/4D from
the start

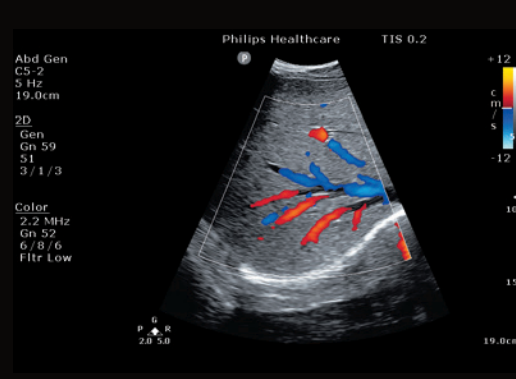
ClearVue 850
Advanced capability,
quantification,
and ergonomics

ClearVue clinical excellence

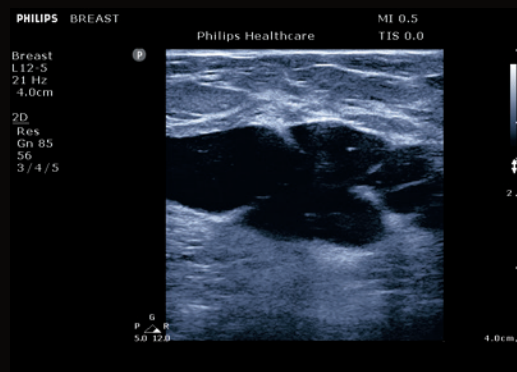
ClearVue offers versatility across multiple clinical specialties, including general imaging, abdominal, vascular, musculoskeletal, small parts, OB, and cardiac.



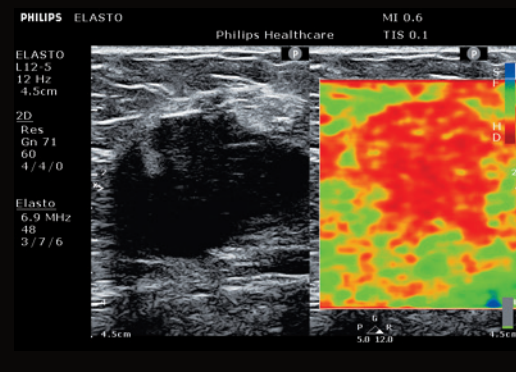
Liver



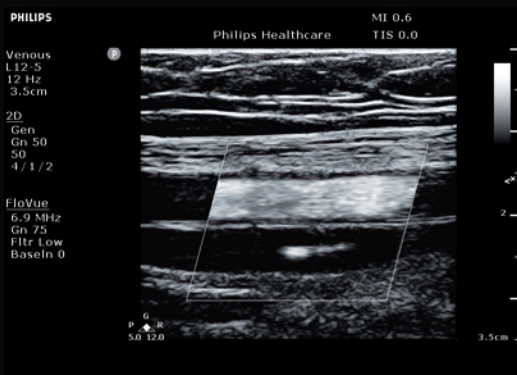
Liver vasculature



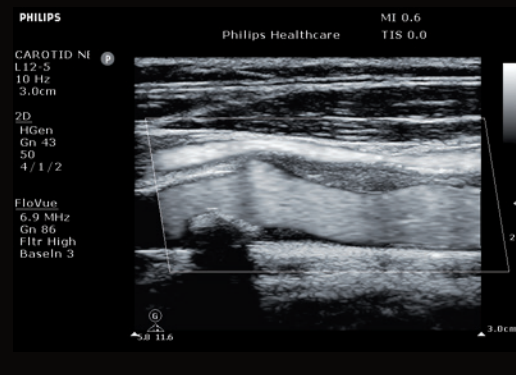
Complex cyst in breast



Elastogram in intraductal carcinoma of breast

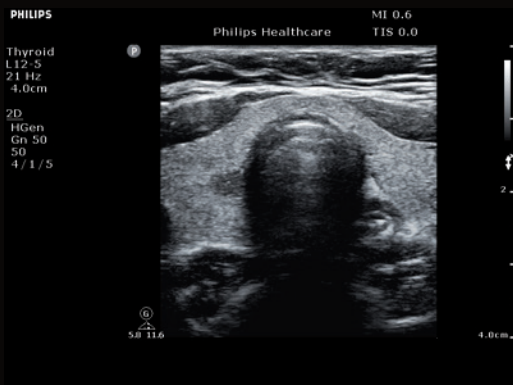


FloVue – incompetence in femoral vein

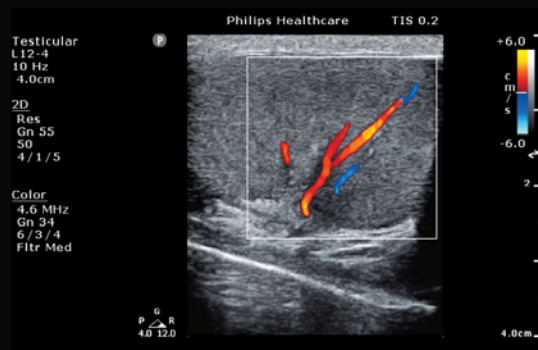


FloVue – soft plaque in carotid

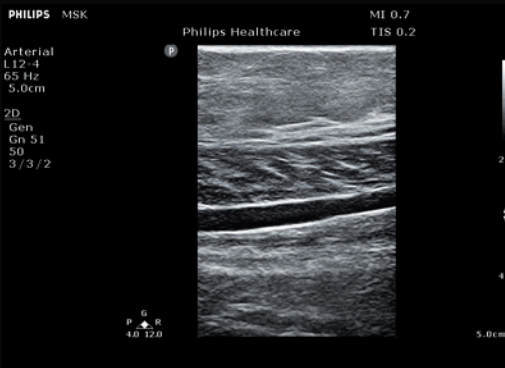
The proof is in the images



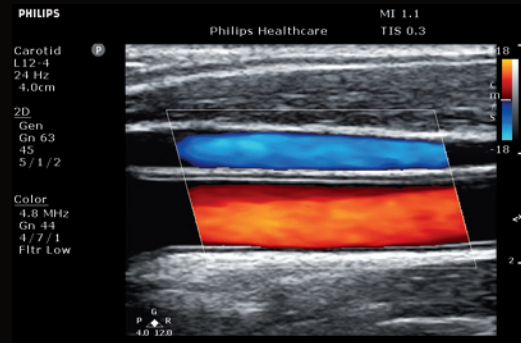
Thyroid gland



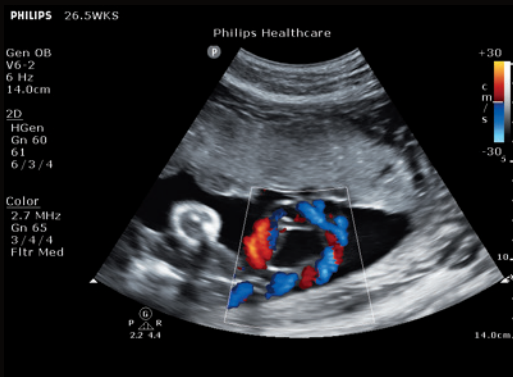
Testicular flow



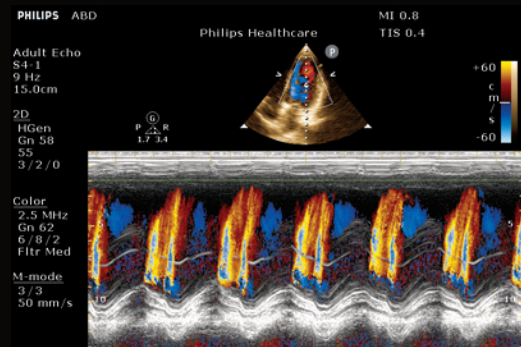
Popliteal artery



Flow in common carotid artery and jugular vein



Umbilical artery



Color M-mode

Find **your** ClearVue

The ClearVue family has something for everyone



ClearVue 850
Advanced capability,
quantification,
and ergonomics



ClearVue 650
Highly adaptable,
with 3D/4D from
the start



ClearVue 550
Hardworking,
for quick scans
in busy settings



ClearVue 350
Office-ready,
and can grow
with your needs

Selected features

	ClearVue 850	ClearVue 650	ClearVue 550	ClearVue 350
Ergonomically advanced console for user height adjustment and comfort	•			
Monitor tilt and swivel	•	•	•	
Monitor articulating arm	•	•	•	
AutoSCAN automatically identifies tissue type and continuously adjusts image gain	•	•	•	•
3D/4D for visualization and analysis of volume data	•	•	Upgradeable to 4D	Upgradeable to 4D
Stress echo for cardiac imaging	•			
Strain elastography to evaluate tissue stiffness	•			
Pulse inversion harmonics provide pure broadband harmonic signals	•	•	•	Upgradeable
SonoCT offers enhanced visibility of curved structures and irregular borders	•	•	•	Upgradeable
XRES to reduce speckle noise artifacts, enhancing margin definition and image quality	•	•	•	Upgradeable
FloVue advanced imaging mode for direct visualization of blood flow in vasculature	•			
Intima media thickness (IMT) imaging to automate measurement	•			
iSlice for quick volumetric display	•			
Curved ROI for OB imaging	•	•	•	•
One-button iSCAN streamlines workflow	•	•	•	•

Advanced technologies

Active Array for superb image quality	•	•	•	•
Broadband beamforming differentiates tissue across multiple patient types	•	•	•	•
Tissue harmonic imaging reduces artifacts while preserving tissue definition and resolution	•	•	•	Upgradeable

Trust in the Philips ultrasound legacy

We've created an innovative portfolio of ultrasound products by striving for change that improves and simplifies the lives of patients and healthcare providers worldwide. The ClearVue family with leading-edge technology and an intuitive design allows for quality healthcare that is now more accessible and affordable from a brand you can trust.



Bring **ease** to your day

Every ClearVue system is light and compact, so you can easily maneuver it, with a smart, modular design for reliability and easy serviceability.





The sleek control panel is designed for intuitive use.

Speed image acquisition and management



The ClearVue family features a comprehensive range of Active Array transducers to allow a wide range of scanning.

Green for you and your community

Sustainability at Philips is all about improving the health and well-being of individuals and their communities. ClearVue systems are energy-efficient with low power consumption to help save on energy costs. The low heat dissipation is ideal in small rooms.



Staying on top of today's complex and ever-changing healthcare environment is challenging enough. The last thing you need to worry about is keeping your care systems up and running smoothly.

Count on us

as your patients count on you



Always there, always on

We work as one with your team to keep your system running smoothly, seven days a week if needed.* We share your team's dedication to solve issues before they happen, and the drive to keep going day and night until the job is done.

Remote Desktop

Where available, Remote Desktop allows for "virtual visits" to enhance technical and clinical support and to offer new options for training.

Remote Service Network

You can also connect your system to the Philips Remote Service Network and enter a support request directly from your ClearVue system, or generate a utilization report that provides data on key parameters to help you manage system use.

On-cart maintenance

On-cart software maintenance tools help optimize, maintain, and repair system software with ease while preserving custom annotations, calculations, presets, and patient data.

Understanding your needs, designed for you

Our flexible services and education offerings can be adapted to your needs in order to support your internal teams.

* Requires minimum RightFit contract. Conditions apply. Offerings are available in selected countries and for selected products only.



Sharing risk, increasing the return on your investment

Partner with us to maximize utilization and uptime of your system and ongoing investments. By teaming up with Philips to take care of your system, you can worry about what really matters — delivering better care, to more people, at lower cost. Together, we can create a healthier future.

