

GE Healthcare

# Vivid iq

The power to take you places.



# Portable. Powerful. In touch.

Vivid™ iq\* delivers a combination of portability and power that fits right in with your needs – wherever your journey takes you.<sup>1</sup>

It's the next step forward from the partner who defined the high-end compact category ... and continues to innovate to help you adapt to changing challenges.

Where will Vivid iq take you?



## Echo Lab

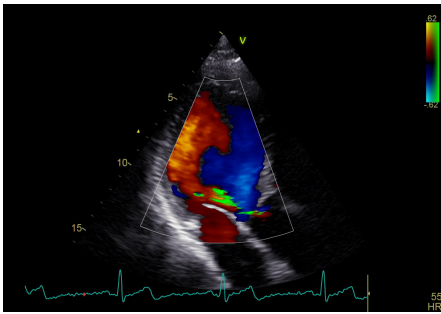
### Visualization

Advanced. Accessible. Adaptable.

Wherever you and your patients need it,<sup>1</sup> Vivid iq delivers premium image quality for cardiac care, including quantification tools like 2D Auto EF, TVI, IMT and ICE,<sup>2,3</sup> and shared services.

### TTE

You don't have to sacrifice exceptional image quality for the convenience of a compact system.



### Color Flow

Excellent color sensitivity, contrast resolution and spectral crispness.

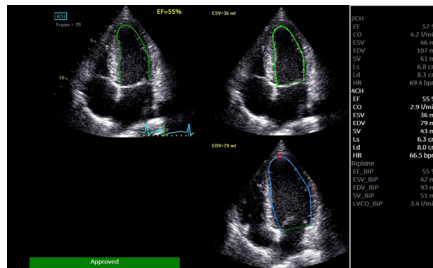
### TEE

Vivid iq makes 2D TEE's crucial information into heart function accessible without compromising productivity.

### Quantification

Exploration Made Easy

Quantification with Vivid iq is all about helping you evaluate problems and pursue the path forward. Take advantage of a full suite of simple, intuitive tools to make your work easy and efficient such as AutoEF, Anatomical M-Mode and IMT.



### AutoEF

Automatically assess left ventricular ejection fraction using an automated, speckle-tracking ROI tool.

### Workflow

In Touch with Your Day

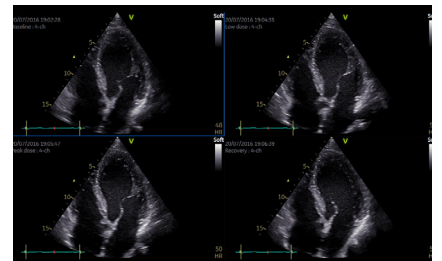
Tap into the smooth user experience you expect from Vivid ultrasound, enhanced to make your work easier with automated functions as well as touchscreen features similar to those you're accustomed to on your own smart devices.

### Touch Interface

- Improved keystrokes compared to Vivid q
- Tablet-like gestures – tap, pinch, zoom
- Intuitive keyboard

### TTE

Convenient applications make fundamental exams fast and easy, such as Auto Gain and Smart Stress.<sup>3</sup>



### Smart Stress<sup>3</sup>

Pharmaceutical, treadmill and bicycle stress exam protocols, with user configurable templates and shuffle mode. Save over 17 imaging parameters for each imaging plane, and then recall them at each stress level to help reduce the need for system adjustments.

## Interventional

### Visualization

Advanced. Accessible. Adaptable.

Positive interventional outcomes begin with detailed imaging. With Vivid *iq*, accurate and actionable information about your patient's anatomy and function are always close at hand.

### TEE

- **2D TEE** – Vivid *iq* makes 2D TEE's crucial information into heart function accessible without compromising productivity.
- **Intra Cardiac Echo (ICE)<sup>2</sup>** – Vivid *iq* combines exceptional image detail with ICE technology, strengthening real-time monitoring and guidance during procedures.

### Quantification

Exploration Made Easy

Quantification with Vivid *iq* is all about helping you evaluate problems and pursue the path forward. Take advantage of a full suite of simple, intuitive tools to make your work easy and efficient.

### Workflow

In Touch with Your Day

Tap into the smooth user experience you expect from Vivid ultrasound, enhanced to make your work easier with automated functions as well as touchscreen features similar to those you're accustomed to on your own smart devices.

### Touch Interface

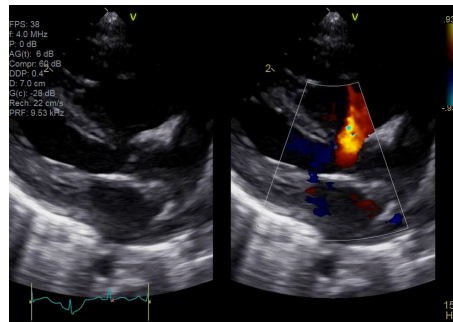
- Improved keystrokes compared to Vivid *q*
- Tablet-like gestures – tap, pinch, zoom
- Intuitive keyboard

## ICU/CCU

The Vivid *iq* can help meet the needs within the ICU and CCU with its small footprint, allowing for minimal space. With today's increasing patient volumes, you can count on Vivid *iq* to help you adapt to new challenges with the combination of power and portability to help you achieve the speed and quality in the critical care environment meeting the demands necessary to treat critical patients.

## Pediatrics

Small structures and fast heartbeats present unique challenges to imaging. Vivid *iq* helps you make quick, confident diagnoses for a wide range of pediatric and neonatal patients and their families. Vivid *iq* offers pediatric TTE as well as pediatric 2D TEE imaging.



### Color Flow

Excellent color sensitivity, contrast resolution and spectral crispness.

## Shared Services

Shared services pose a wide variety of patient challenges. Manage them all with the help of definitive diagnostic insights via Vivid *iq*, in areas including vascular, abdominal, OB/GYN and small-parts applications.

- **Virtual Convex** – Extends the field of view when using linear transducers.
- **B-Flow** – Provides advanced spatial and temporal resolution to help assess blood flow and vessel wall structure without the limitations of Doppler
- **Blood Flow Imaging** – Provides enhanced visualization of blood flow dynamics using a signal-processing algorithm for visualizing blood flow data.

## Reliability

The Vivid *iq* was built to handle tough daily demands allowing you to focus on the patient and the ultrasound images during the exam. We are so confident in the reliability that we are offering multiyear service (regions may vary, please check with your local representative). In the event your product needs attention, we offer a loaner program which reduces your down time.

The new design has allowed for better probe insertion for more reliability and protection. We have also designed the ECG to fit under the probe area for better protection, allowing nothing to protrude from the sides. All of these new enhancements allow for better reliability and robustness.

## Design

### As Agile As You Need to Be

Vivid *iq* is a compact, yet powerful cardiovascular ultrasound. Carry it under your arm or on your cart<sup>3</sup> with a multi-connector<sup>3</sup> for probes to wherever you need it ... from the echo lab to the OR ... from the hospital to a rural location.<sup>1</sup>

### Console

- Lightweight – 10% lighter and 10% thinner than the Vivid *q*
- Closed design – allows cleaning with disinfectant solutions (refer to the user manual)
- Portable – up to 1-hour battery (with full charge) – Smart Standby

### Cart<sup>3</sup>

The newly designed cart was created to protect the console during transportation. The cart also allows for a much better viewing angle with the increased height adjustments for scanning while standing or sitting.

- Battery pack<sup>3</sup> (up to 3 hours with full charge)
- 4-probe port<sup>3</sup>

### Probes

- 11 + (5) ICE<sup>2</sup>
- Compatible
- Broad selection





## About GE Healthcare

GE Healthcare provides transformational medical technologies and services to meet the demand for increased access, enhanced quality and more affordable healthcare around the world. GE (NYSE: GE) works on things that matter - great people and technologies taking on tough challenges. From medical imaging, software & IT, patient monitoring and diagnostics to drug discovery, biopharmaceutical manufacturing technologies and performance improvement solutions, GE Healthcare helps medical professionals deliver great healthcare to their patients.

## Imagination at work

GE Healthcare  
9900 Innovation Drive  
Wauwatosa, WI 53226  
USA

[www.gehealthcare.com](http://www.gehealthcare.com)

<sup>1</sup> The device has been verified for limited use outside of professional healthcare facilities and has not been evaluated for use during transport. Use is restricted to environmental properties described in the user manual; please contact your GE Healthcare sales representative for detailed information.

<sup>2</sup> ICE catheter availability varies by country. Please contact Biosense Webster® directly.

<sup>3</sup> Optional.

\* Vivid iq is not available in all countries.

Please note that some of the probes, options or features described may NOT be available for sale in all countries. Please contact your local sales representative for more information.

©2016 General Electric Company - All rights reserved.

General Electric Company reserves the right to make changes in specifications and features shown herein, or discontinue the product described at any time without notice or obligation. This does not constitute a representation or warranty or documentation regarding the product or service featured. The results expressed in this document may not be applicable to a particular site or installation and individual results may vary. This document and its contents are provided to you for informational purposes only and do not constitute a representation, warranty or performance guarantee from GE Healthcare.

GE, the GE Monogram, Imagination at work, and Vivid are trademarks of General Electric Company or one of its subsidiaries.

Biosense Webster is a trademark of Biosense Webster, Inc.

All third party trademarks are the property of their respective owners.

GE Medical Systems Ultrasound & Primary Care Diagnostics, LLC, a General Electric Company, doing business as GE Healthcare